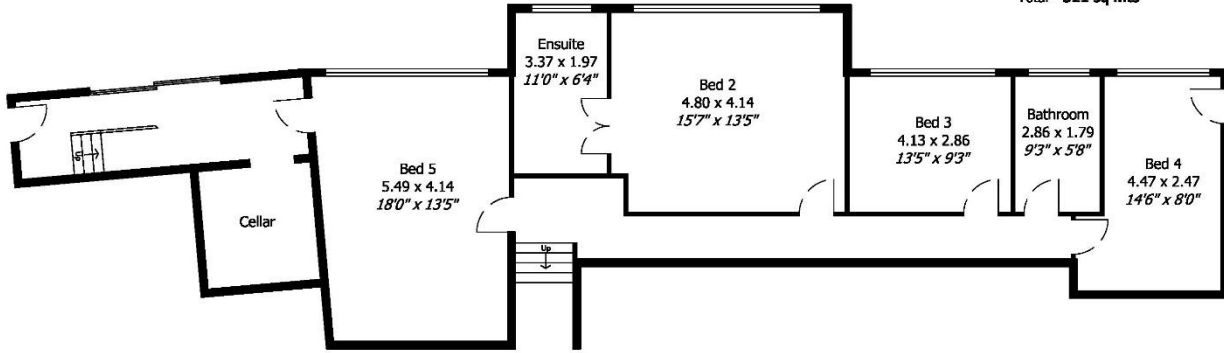


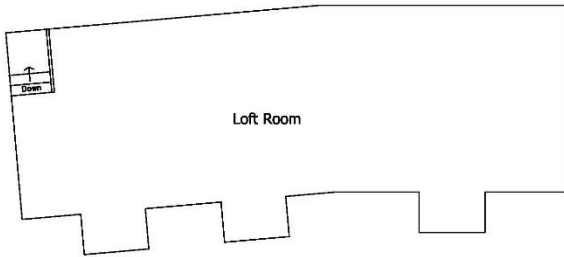
Green Bay Floor Plan

Ground Floor - 188 sq mts.
 Lower Ground Floor - 104 sq mts.
 Loft Room - 29 sq mts.
 Total - 321 sq mts

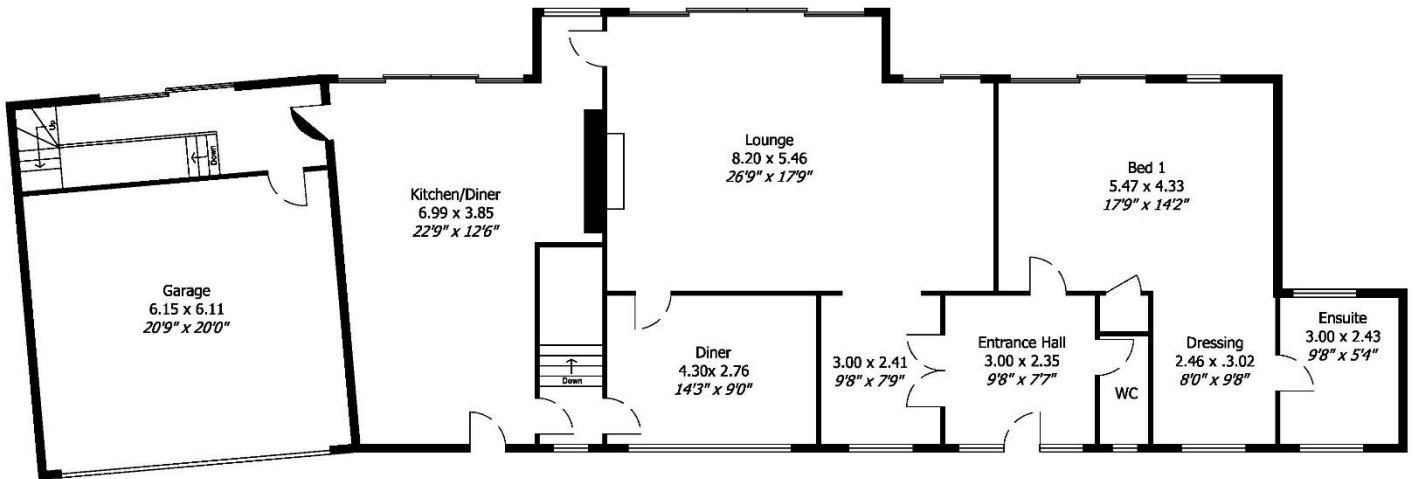


Greenbay Birch Hill Croydon CR0 5HT - Lower Ground Floor
 Approximate Area inc Stairways, Corridor and Cellar - 104 sq mts

Whilst every attempt has been made to ensure the accuracy of this floor plan, all measurements are approximate and no responsibility is taken for any error, omission or mis-statement. This plan is for illustrative purposes only and should be used as such by any prospective purchaser and it does not form any part of any contract or legal documentation. Any services, systems and appliances if shown have not been tested and no guarantee as to their operability or efficiency can be given.



Ground Floor - 188 sq mts.
 Lower Ground Floor - 104 sq mts.
 Loft Room - 29 sq mts.
 Total - 321 sq mts



Greenbay Birch Hill Croydon CR0 5HT - Ground Floor
 Approximate Area inc Stairways - 188 sq mts.
 Approximate Area Loft Room above Garage and Kitchen - 29 sq mts.

Whilst every attempt has been made to ensure the accuracy of this floor plan, all measurements are approximate and no responsibility is taken for any error, omission or mis-statement. This plan is for illustrative purposes only and should be used as such by any prospective purchaser and it does not form any part of any contract or legal documentation. Any services, systems and appliances if shown have not been tested and no guarantee as to their operability or efficiency can be given.